



Verband Hamburger
und Bremer
Schiffsmakler e.V.

New ConTex Container Ship Time Charter Assessment Index

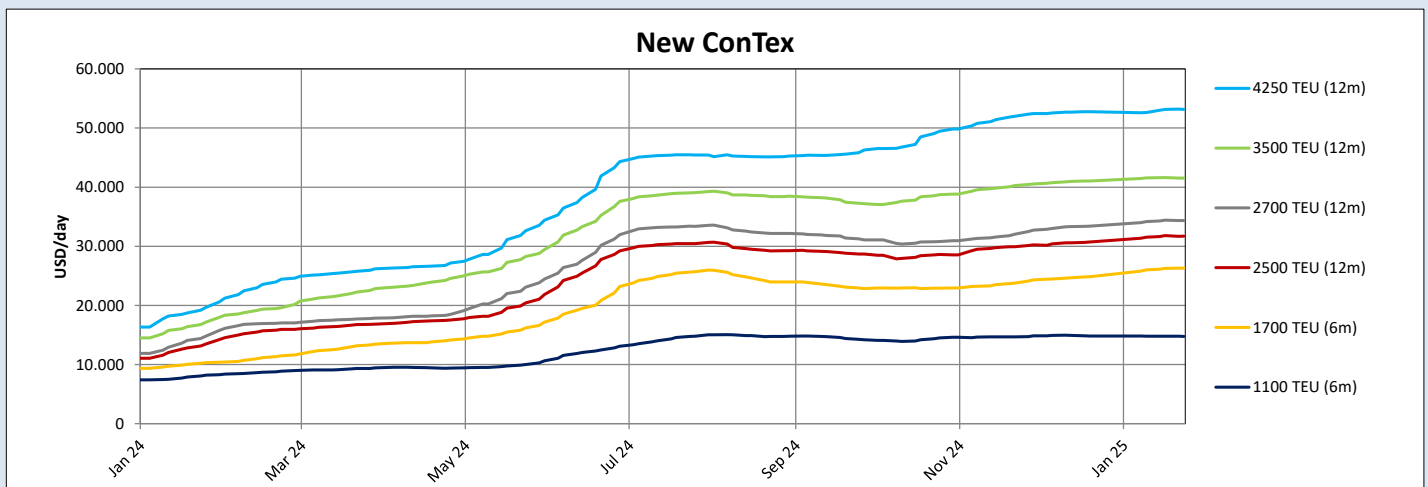
New ConTex*		1429	
23.01.25		6 mos	12 mos
Geared	1100 TEU	\$14.750	n.a.
	1700 TEU	\$26.292	
	2500 TEU	\$31.709	
Gearless	2700 TEU	n.a.	\$34.336
	3500 TEU		\$41.520
	4250 TEU		\$53.135

Legend		
↑	up	+ 2% or more
↗	steady up	from +1% to +1,9%
→	steady	+/- 1%
↘	steady down	from -1% to -1,9%
↓	down	- 2% or less

*New ConTex evaluation is EXCLUDING 1800 TEU for 6 months period, 1100/1700/5700/6500 TEU groups for 12 months period & 2500/2700/3500/4250 TEU groups for 24 months period

New ConTex-Commentary - issued:		23.01.25
<p>The NewConTex basically didn't really move in comparison to last week (-1).</p> <p>However, two events happening during the course of this week, could very well have an overall effect on the container market (charter & freight) and makes the development of the physical market and the New ConTex fairly difficult to judge and read right now.</p> <p>First, the initial phase of the ceasefire agreement between Israel and the Hamas came into force on last Sunday. Due to same the Houthis declared early in the week that Non-Israel controlled ships are free to transit the Red Sea area again. Subsequently Container Lines might consider rerouting Services via the Suez Canal. Thus resulting in shorter roundvoyage times and less ships required for the respective Services. However this should most likely not be anything happening immediately, as it not yet at all known if the ceasefire will be stable or not and if even an agreement will be found for the 2nd phase of the ceasefire.</p> <p>Secondly, the inauguration of Donald Trump could also have an overall effect on the market due to the tariffs he threatens various countries to imply against. This could surely influence the cargo volumes and/or trading patterns, but this is also too premature to judge.</p> <p>Nevertheless the charter market is expected to remain quiet for a few weeks right now with a "Wait and See" attitude in place due to the latest developments and on top the Chinese New Year is just around the corner.</p>		

New ConTex Development											
Vessel type	Evaluated Period	Today	Week-on-Week		Month-on-Month		Year-on-Year				
		23.01.25	16.01.25	Change	Change	19.12.24	Change	Change	25.01.24	Change	Change
New ConTex*		1429	1430	-1	⇒ -0,1%	1398	31	↑ 2,2%	605	824	↑ 136,2%
1100 TEU	6 mos	\$14.750	\$14.770	-\$20	⇒ -0,1%	\$14.832	-\$82	⇒ -0,6%	\$8.220	\$6.530	↑ 79,4%
	12 mos	\$13.984	\$14.034	-\$50	⇒ -0,4%	\$14.002	-\$18	⇒ -0,1%	\$7.584	\$6.400	↑ 84,4%
1700 TEU	6 mos	\$26.292	\$26.250	\$42	⇒ 0,2%	\$24.841	\$1.451	↑ 5,8%	\$10.316	\$15.976	↑ 154,9%
	12 mos	\$22.873	\$22.641	\$232	↗ 1,0%	\$21.736	\$1.137	↑ 5,2%	\$9.614	\$13.259	↑ 137,9%
1800 TEU	6 mos	\$30.145	\$30.105	\$40	⇒ 0,1%	\$29.436	\$709	↑ 2,4%	\$11.866	\$18.279	↑ 154,0%
	12 mos	\$31.709	\$31.805	-\$96	⇒ -0,3%	\$30.727	\$982	↑ 3,2%	\$13.466	\$18.243	↑ 135,5%
2500 TEU	24 mos	\$26.364	\$26.527	-\$163	⇒ -0,6%	\$25.795	\$569	↑ 2,2%	\$11.509	\$14.855	↑ 129,1%
	12 mos	\$34.336	\$34.418	-\$82	⇒ -0,2%	\$33.395	\$941	↑ 2,8%	\$14.827	\$19.509	↑ 131,6%
2700 TEU	24 mos	\$28.232	\$28.300	-\$68	⇒ -0,2%	\$27.900	\$332	↗ 1,2%	\$12.777	\$15.455	↑ 121,0%
	12 mos	\$41.520	\$41.625	-\$105	⇒ -0,3%	\$41.050	\$470	↗ 1,1%	\$17.195	\$24.325	↑ 141,5%
3500 TEU	24 mos	\$33.350	\$33.425	-\$75	⇒ -0,2%	\$33.530	-\$180	⇒ -0,5%	\$14.988	\$18.362	↑ 122,5%
	12 mos	\$53.135	\$53.135	\$0	⇒ 0,0%	\$52.745	\$390	⇒ 0,7%	\$19.660	\$33.475	↑ 170,3%
4250 TEU	24 mos	\$41.025	\$41.365	-\$340	⇒ -0,8%	\$41.600	-\$575	⇒ -1,4%	\$17.110	\$23.915	↑ 139,8%
	12 mos	\$60.850	\$60.528	\$322	⇒ 0,5%	\$60.444	\$406	⇒ 0,7%	\$24.706	\$36.144	↑ 146,3%
6500 TEU	12 mos	\$68.033	\$67.706	\$327	⇒ 0,5%	\$67.489	\$544	⇒ 0,8%	\$27.017	\$41.016	↑ 151,8%



Disclaimer

The brand NewConTex is copyrighted by Verband Hamburger und Bremer Schiffsmakler e.V. ("VHBS e.V.") and is protected by law. The NewConTex may be published only with the source reference © VHBS e.V. It is distributed to the general public for information purposes only and cannot be relied upon as a trading recommendation and does not constitute a solicitation to trade. The reported information is obtained from market sources. While every effort has been made to ensure the accuracy and the completeness of the NewConTex, VHBS e.V. makes no representations, conditions or warranties of any kind, express or implied, about the completeness, accuracy, reliability, or suitability of the NewConTex. Any reliance you place on the NewConTex is therefore strictly at your own risk. Neither VHBS e.V. nor any of its subsidiaries or affiliates nor any employee of the foregoing shall be liable or have any responsibility for any loss, liability or damage, cost or expense including without limitation, indirect or consequential loss or damage, or any loss or damage whatsoever arising from loss of data or profits arising out of, or in connection with, the use of and the reliance on the NewConTex, save for death or personal injury arising from VHBS e.V. negligence and fraudulent misrepresentation that cannot, under German law, be excluded.